

P1571Y-P4



Product characteristics

- 15-inch LCD, 1024*768, 4:3, capacitive touch screen
- 1 * HD OUTPUT
- 5*Intel I210AT Gigabit nics, four of which support POE
- 4*RS232 serial ports, COM1 to 2 RS232 DB9 serial ports, COM2 supporting RS485/422 and COM3-4 RS232 on the 2*12P Phoenix terminal, COM3 supporting RS485
- four in four out GPIO, 2 * USB3.0, 2 * USB2.0
- 9 to 36V Wide voltage input
- Aluminum alloy material, fanless cooling structure

Model	P1571Y-P4 V1.0	
chassis	Material/Struct	Aluminum alloy material, fanless cooling structure
	colour	silver
	Dimensions	L368*W292*H62mm
	Weight (bare	3.8 KG
	Install	Support VESA/ embedded panel installation
LCD screen	type	15-inch LCD, 4:3, front screen
	Resolution	1024 * 768
	luminance	350 cd/m2
Touch screen	type	Capacitive screen, 10 touch (adjustable resistance screen)
	Light	More than 86%
IO interface	POWER	1* Power button, 1* one key restore (and reset switch to choose one),
	LED	1* Power indicator, 1* hard disk indicator
	Display	1* HD OUTPUT1.4 (4096 * 2304 @ 24 hz)
	LAN	5* Intel I210AT Gigabit network adapters, four of which support
	USB	2* USB3.0, 2 * USB2.0
	COM	4* RS232 serial port, COM1~2 RS232 DB9 serial port, in which COM2 supports RS485/422, COM3~4 RS232 on the 2*12pin Phoenix terminal, in which COM3 supports RS485, COM1-2 supports the 9pin live function
	Phoenix	2*12Pin(4 in 4 out GPIO, switching signal, COM3~COM4, 5V VCC and
	Dip switch	10-bit dip switch, COM2 to 3 RS232/485 switch, COM2 RS422 through
	Audio	1*AUDIO, Line out and MIC in one
	Power source	1*DC(5.5*2.5) air interface or 1*2P P=5.08mm Phoenix terminal,
store	SATA	1* 2.5-inch hard disk
	M.2	1*M.2/SSD: Key-M, 2280, NVME PCIEX4 SSD
	MSATA	1*MSATA
extend	M.2	1*M.2/WiFi, supports Key-E, 2230, WiFi module
		1*M.2/5G, supports Key-B, 2242/52, 5G modules
Power demand	Power supply	External power adapter
	Voltage input	9V~36V wide voltage
	Power output	AC TO DC more than 60W (depending on the specific equipment)
environment	Operating	-10°C to 50°C
	Storage	-20°C to 70°C
	Relative	5%-95% relative humidity, no condensation



工业平板

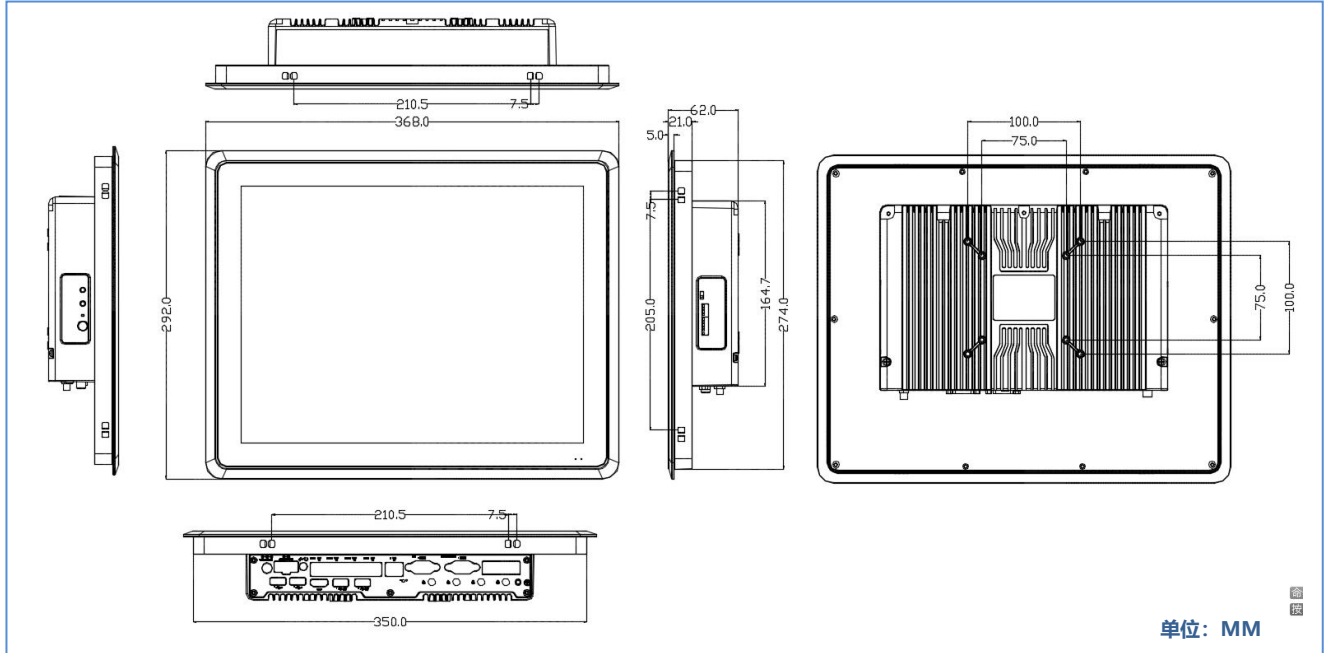
所有产品规格变更, 均不另行通知

Working
vibration

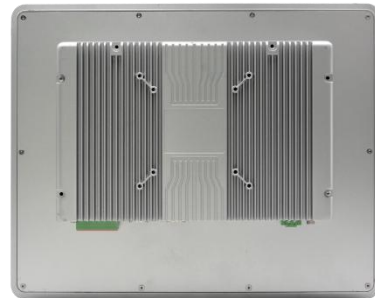
0.5g rms/5-500HZ/random/operating

P1571Y-P4

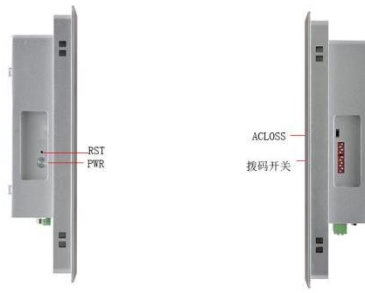
尺寸图



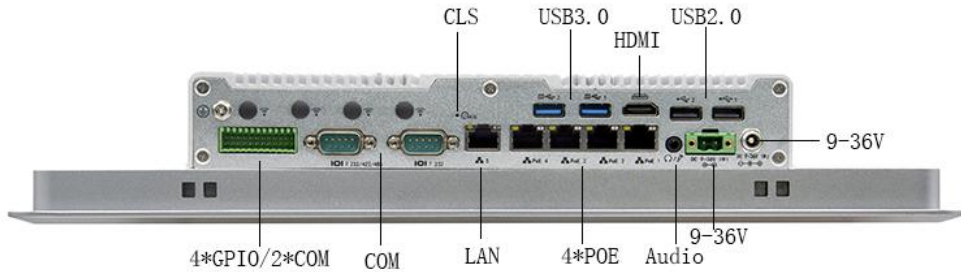
前面板视图



后面板视图



侧面 I/O 视图



底部 I/O 视图

订货信息

No.	Model	CPU	Memory	Motherboard	IO Board	GPIO	LAN	COM	HD OUTP	USB 2.0	USB 3.0	power
1	P1571Y-P4 V1.0(J6412)	J6412/2.00G	2*SODDDR4	P642	P1082-P4/P1071-LED	4 in 4 out	5	4	1	2	2	9~36V
2	P1571Y-P4 V1.0(8260U)	I5-8260U/1.6G	2*SODDDR4	P82	P1082-P4/P1071-LED	4 in 4 out	5	4	1	2	2	9~36V
3	P1571Y-P4 V1.0(7300U)	I5-7300U/2.6G	2*SODDDR4	P68	P1082-P4/P1071-LED	4 in 4 out	5	4	1	2	2	9~36V
4	P1571Y-P4 V1.0(10210U)	I5-10210U/1.6G	2*SODDDR4	P102	P1082-P4/P1071-LED	4 in 4 out	5	4	1	2	2	9~36V
5	P1571Y-P4 V1.0(1135G7)	I5-1135G7/2.4G	2*SODDDR4	P112	P1082-P4/P1071-LED	4 in 4 out	5	4	1	2	2	9~36V
6	P1571Y-C6 V1.0(J6412)	J6412/2.00G	2*SODDDR4	P642	P1082-C6/P1071-LED	4 in 4 out	2	6	1	2	4	9~36V
7	P1571Y-C6 V1.0(8260U)	I5-8260U/1.6G	2*SODDDR4	P82	P1082-C6/P1071-LED	4 in 4 out	2	6	1	2	4	9~36V
8	P1571Y-C6 V1.0(7300U)	I5-7300U/2.6G	2*SODDDR4	P68	P1082-C6/P1071-LED	4 in 4 out	2	6	1	2	4	9~36V
9	P1571Y-C6 V1.0(10210U)	I5-10210U/1.6G	2*SODDDR4	P102	P1082-C6/P1071-LED	4 in 4 out	2	6	1	2	4	9~36V
10	P1571Y-C6 V1.0(1135G7)	I5-1135G7/2.4G	2*SODDDR4	P112	P1082-C6/P1071-LED	4 in 4 out	2	6	1	2	4	9~36V

Note:1、一键还原与复位键二选一，默认一键还原，部分CPU不支持，具体联系FAE，需要复位键，要改硬件。



工业平板

所有产品规格变更，均不另行通知

2、COM2 支持RS232/485/422，RS422的切换通过跳帽COM1_SW1实现，跳帽在IO板上

配件清单

序号	料号	描述	数量	单位	备注
1	03.02.N12-KAKOU-12	卡扣, L16.7*W16.2*H14.4mm	8	pcs	标配
2	03.03.J01-0H015-00	国标电源线_L=1.5m 品字尾	1	pcs	可选
3	03.01.DC0-L090F-90	DC12V/7.5A/90W/DC头2.5双芯/品字尾 电源适配器	1	pcs	可选



工业平板

所有产品规格变更，均不另行通知